

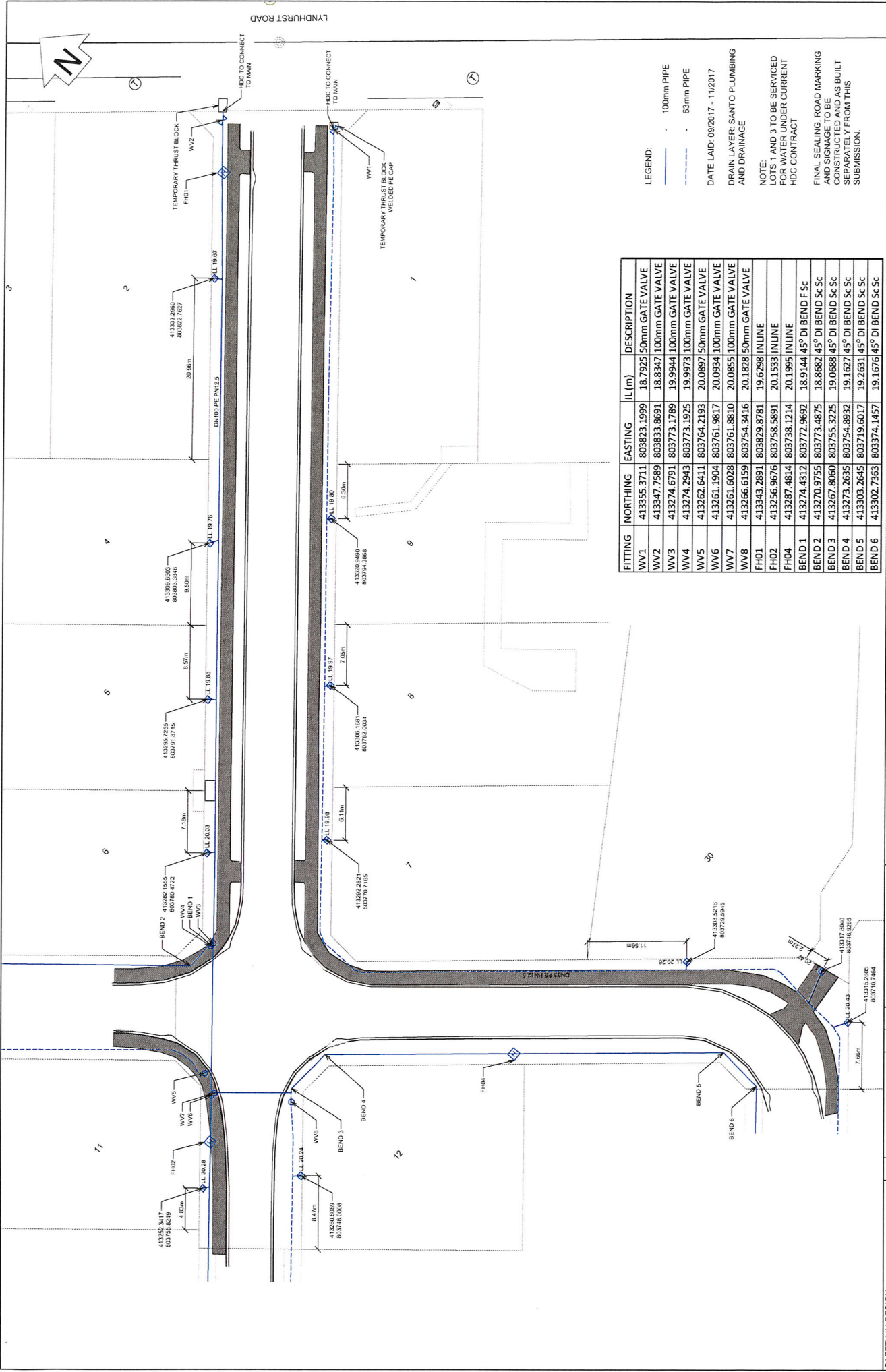


LEGEND

OVERLAND FLOW PATH

0.1m CONTOUR INTERVALS

<p>SAFETY IN DESIGN</p> <p>DESIGNERS AND CONSULTANTS MUST TAKE CARE TO ENSURE THAT ALL STRUCTURES ARE DESIGNED TO WITHSTAND THE LOADS AND STRESSES TO WHICH THEY WILL BE SUBJECTED DURING CONSTRUCTION, OPERATION AND MAINTENANCE. DESIGNERS AND CONSULTANTS MUST TAKE CARE TO ENSURE THAT ALL STRUCTURES ARE DESIGNED TO WITHSTAND THE LOADS AND STRESSES TO WHICH THEY WILL BE SUBJECTED DURING CONSTRUCTION, OPERATION AND MAINTENANCE.</p>	REV	1	REASON FOR ISSUE	DATE	BY
<p>THE CONTRACTOR IS TO BE AWARE OF ALL REQUIREMENTS OF THE PROPOSER'S STATEMENT OF WORKS AND TO ENSURE THAT ALL ELEMENTS ARE READY TO BE INSPECTED.</p>					
<p>stratagroup CONSULTING ENGINEERS Business HQ P 06 850 7645 F 06 850 7645 www.stratagroup.net.nz Structural Fire Civil Project Management Hobsonville, New Zealand</p>					
<p>CLIENT</p> <p>GREENSTONE LAND DEVELOPMENT LTD</p>			<p>PROJECT</p> <p>LYNDHURST ARBUCKLE SUBDIVISION RMA 20170183</p>		
<p>TITLE</p> <p>CONTOURS PLAN AND OVERLAND FLOW STAGE 3 AS BUILT</p>					
<p>DESIGNED BY</p> <p>DATE</p> <p>SCALE</p> <p>PROJECT NO.</p>	<p>0 2 4 6 8 12</p> <p>1:1000 (AS BUILT)</p> <p>J4293</p>	<p>SHEET</p> <p>C001</p>	<p>REVISION</p> <p>1</p>	<p>This drawing was prepared in accordance with the requirements of the Resource Management Act 1991 and the Resource Management Act Regulations 2002. Any unauthorised reproduction or use of this drawing is prohibited.</p>	



FITTING	NORTHING	EASTING	IL (m)	DESCRIPTION
WV1	413355.3711	803823.1999	18.7925	50mm GATE VALVE
WV2	413347.7589	803833.8691	18.8347	100mm GATE VALVE
WV3	413274.6791	803773.1789	19.9944	100mm GATE VALVE
WV4	413274.2943	803773.1925	19.9973	100mm GATE VALVE
WV5	413262.6411	803764.2193	20.0897	50mm GATE VALVE
WV6	413261.1904	803761.9817	20.0934	100mm GATE VALVE
WV7	413261.6028	803761.8810	20.0855	100mm GATE VALVE
WV8	413266.6159	803754.3416	20.1828	50mm GATE VALVE
FH01	413343.2891	803829.8781	19.6298	INLINE
FH02	413256.9676	803758.5891	20.1553	INLINE
FH04	413287.4814	803738.1214	20.1995	INLINE
BEND 1	413274.4312	803772.9692	18.9144	45° DI BEND F Sc
BEND 2	413270.9755	803773.4875	18.8682	45° DI BEND Sc Sc
BEND 3	413267.8060	803755.3225	19.0688	45° DI BEND Sc Sc
BEND 4	413271.2635	803754.8932	19.1627	45° DI BEND Sc Sc
BEND 5	413303.2645	803719.6017	19.2631	45° DI BEND Sc Sc
BEND 6	413302.7363	803374.1457	19.1676	45° DI BEND Sc Sc

LEGEND:
 - - - 100mm PIPE
 - - - 63mm PIPE

DATE LAID: 09/2017 - 11/2017
 DRAINAGE: SANITARY PLUMBING AND DRAINAGE

NOTE:
 LOTS 1 AND 3 TO BE SERVICED FOR WATER UNDER CURRENT HDC CONTRACT
 FINAL SEALING, ROAD MARKING AND SIGNAGE TO BE CONSTRUCTED AS BUILT SEPARATELY FROM THIS SUBMISSION.

CLIENT: GREENSTONE LAND DEVELOPMENT LTD

PROJECT: LYNTHURST SUBDIVISION

DATE: 25/10/17

REASON FOR ISSUE:

REVISIONS:

REV	DATE	BY
1	25/10/17	RE

THE CONTRACTOR IS TO BE AWARE OF ALL THE REQUIREMENTS OF THE PRODUCTION STATEMENT FOR CONSTRUCTION REVIEW DOCUMENTATION AND NOTIFICATION WHEN ALL STRUCTURAL ELEMENTS ARE READY TO BE INSPECTED.

SAFETY IN DESIGN:
 ALL REASONABLY PRACTICABLE STEPS HAVE BEEN TAKEN TO ENSURE THE DESIGN OF THIS FACILITY IS SAFE FOR THE GROUP'S SCOPE OF WORK FOR THIS DESIGN IN ACCORDANCE WITH BEST PRACTICE. NOTE BY DESIGNER FOR SAFETY IN BUILDINGS AND DESIGN OF STRUCTURES: THE DESIGNER HAS CONSIDERED THE SAFETY OF THE OWNER AND/OR OPERATOR TO ENSURE APPROPRIATE PROVISIONS ARE MADE TO PROTECT THE SAFETY OF THE WORKERS AND THE PUBLIC IN THE OPERATION OF THE FACILITY.

STRATAGROUP CONSULTING ENGINEERS
 10/05/2016
 F 08 978 7885
 www.stratagroup.net.nz

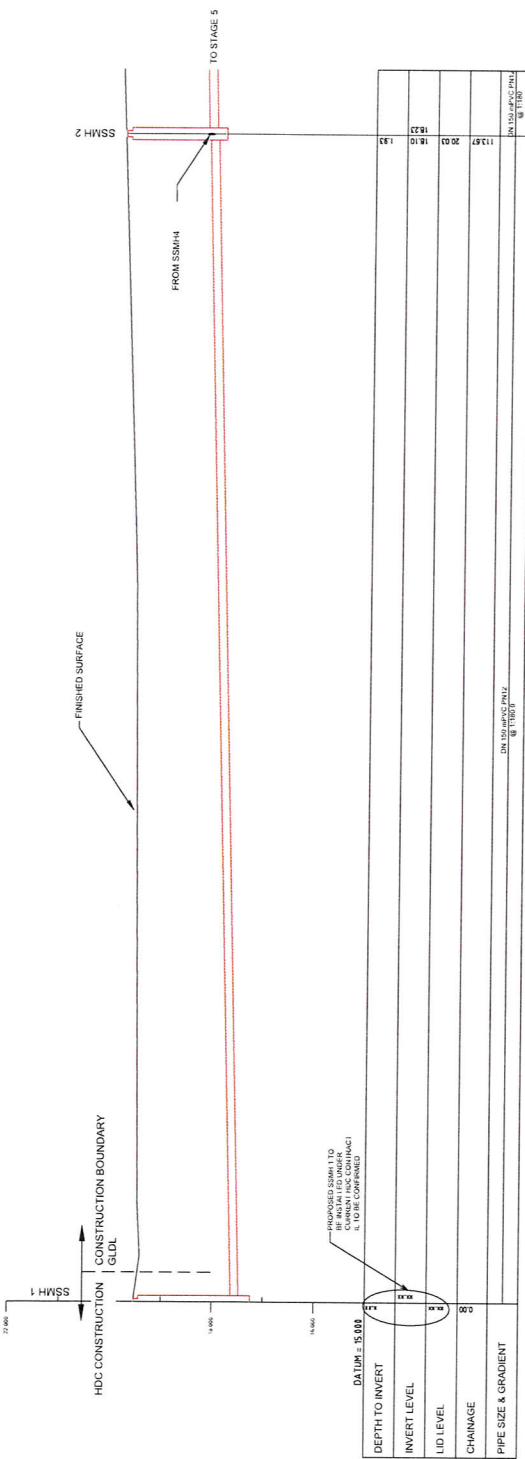
PROJECT NO: J4293

SHEET: C005

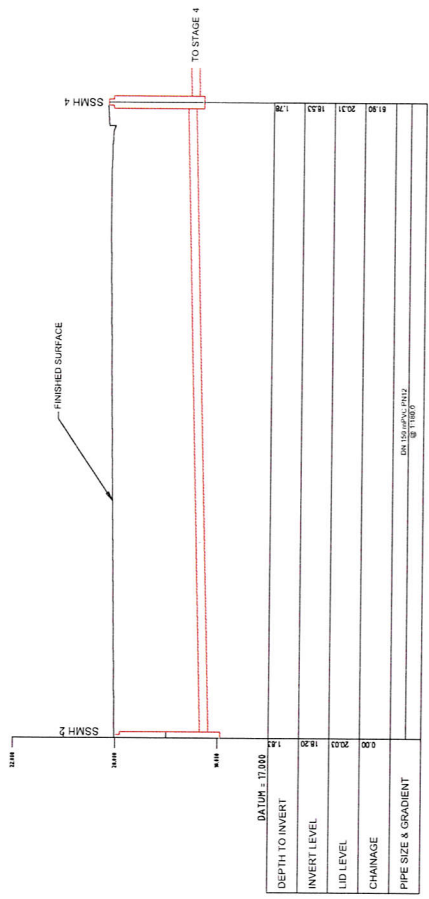
REVISION: 1

SCALE: 1:200 (Half Scale 4:00)

THIS DRAWING AND ITS CONTENTS ARE THE PROPERTY OF STRATA GROUP CONSULTING ENGINEERS LTD. ANY UNAUTHORIZED REPRODUCTION OR REPRODUCTION IN FULL OR PART IS PROHIBITED.



LONGITUDINAL SECTION
HORIZONTAL SCALE:1:250 VERTICAL SCALE 1:50



LONGITUDINAL SECTION
HORIZONTAL SCALE:1:250 VERTICAL SCALE 1:50

SAFETY IN DESIGN

THE ENGINEER HAS CONSIDERED THE SAFETY OF THE DESIGN AND THE PUBLIC IN THE OPERATION OF THE FACILITY. THE ENGINEER'S RESPONSIBILITY IS LIMITED TO THE DESIGN AND THE PUBLIC IN THE OPERATION OF THE FACILITY. THE ENGINEER'S RESPONSIBILITY IS LIMITED TO THE DESIGN AND THE PUBLIC IN THE OPERATION OF THE FACILITY.

REV	REASON FOR ISSUE	DATE	BY
1 <td>FOR ISSUE <td></td> <td></td> </td>	FOR ISSUE <td></td> <td></td>		

THE CONTRACTOR IS TO BE RESPONSIBLE FOR THE SAFETY OF THE DESIGN AND THE PUBLIC IN THE OPERATION OF THE FACILITY. THE ENGINEER'S RESPONSIBILITY IS LIMITED TO THE DESIGN AND THE PUBLIC IN THE OPERATION OF THE FACILITY. THE ENGINEER'S RESPONSIBILITY IS LIMITED TO THE DESIGN AND THE PUBLIC IN THE OPERATION OF THE FACILITY.

stratagroup
CONSULTING ENGINEERS
KUMU 740
Business HQ
Hastings, New Zealand

www.stratagroup.net.nz
P 06 874 7445
F 06 874 7446

Structural Fire Civil Project Management

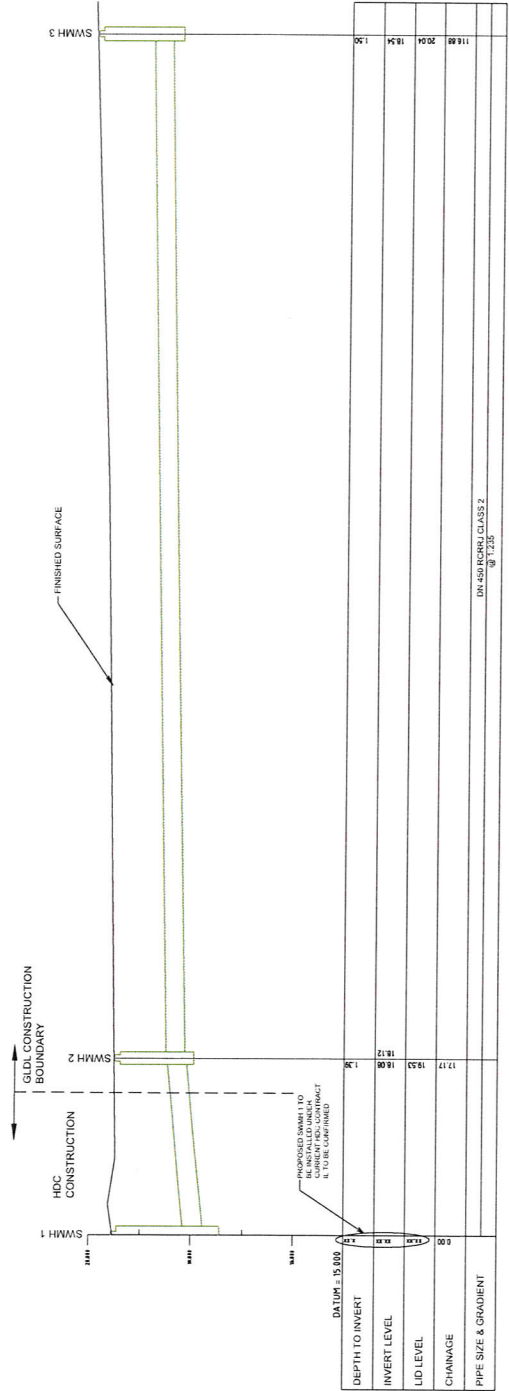
CLIENT
GREENSTONE LAND DEVELOPMENTS LTD

PROJECT
LYNDHURST ARBUCKLE

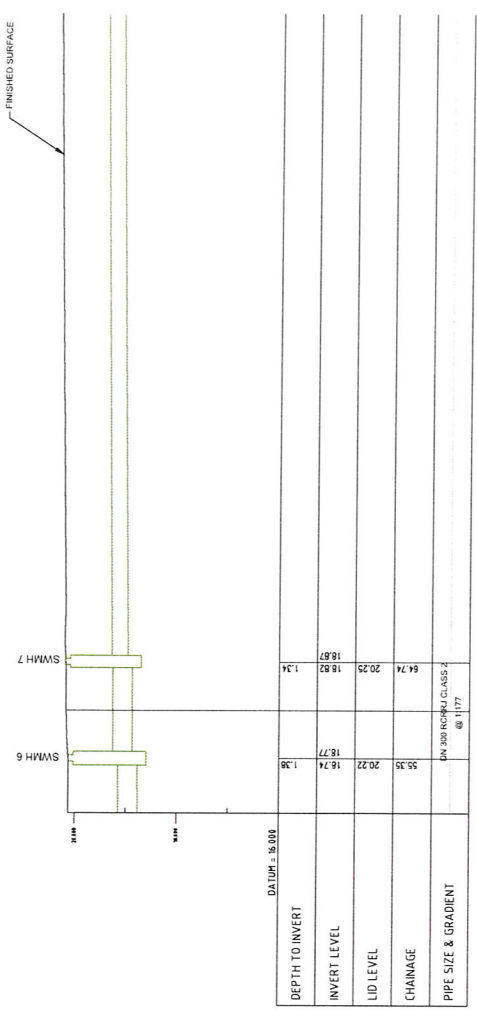
TITLE
WASTE WATER LONGITUDINAL SECTIONS AS BUILT

DESIGNED (D)	0	2	4	6	8
CHECKED (C)	DATE: 01/21/17				
PROJECT NO.	J4293	C007	SHEET		
PROJECT NAME	REVISION				

This drawing and its contents are the property of Stratagroup Consulting Engineers Ltd. Any unauthorised reproduction or reproduction in full or part is prohibited.



LONGITUDINAL SECTION
HORIZONTAL SCALE: 1:250 VERTICAL SCALE 1:50



LONGITUDINAL SECTION
HORIZONTAL SCALE: 1:250 VERTICAL SCALE 1:50

SAFETY IN DESIGN
THE CONTRACTOR IS TO BE AWARE OF ALL REQUIREMENTS OF THE PRODUCTION STATEMENT AND THE CONTRACTOR WILL REQUIRE 24 HOURS PRIOR NOTIFICATION WHEN ALL STRUCTURAL ELEMENTS ARE READY TO BE INSPECTED.

FOR SUBMIT
DATE: 11/07/18
BY: [Signature]

stratagroup
CONSULTING ENGINEERS
Business A/D
P 06 859 7546
F 06 859 7645
www.stratagroup.net.nz
Structural Free Cost Project Management

CLIENT
GREENSTONE LAND DEVELOPMENTS LTD

PROJECT
LYNDHURST ARBUCKLE SUBDIVISION
RMA 20170183

TITLE
WASTEWATER LONGITUDINAL SECTIONS AS BUILT

DESIGNED BY
CHECKED BY
DATE 04/2/17
PROJECT NO. J4293
SHEET C008
REVISION 1