



LEGEND:

 - OVERLAND FLOW PATH

 - 0.1m CONTOUR INTERVALS

SAFETY IN DESIGN
 ALL REASONABLY PRACTICABLE STEPS HAVE BEEN TAKEN TO ENSURE SAFETY IN DESIGN HAS BEEN CONSIDERED WITHIN STRATA GROUP'S SCOPE OF WORK FOR THIS DESIGN IN ACCORDANCE WITH IPENZ PRACTICE NOTE 07 "DESIGN FOR SAFETY IN BUILDINGS AND OTHER STRUCTURES (JULY 2006)". IT REMAINS THE RESPONSIBILITY OF THE OWNER AND/OR OPERATOR TO ENSURE APPROPRIATE PRACTICES ARE IN PLACE TO PROTECT THE SAFETY OF THE WORKERS AND THE PUBLIC IN THE OPERATION OF THE FACILITY.

REV	REASON FOR ISSUE	DATE	BY
1	FOR AS BUILT	19/03/2018	PB

THE CONTRACTOR IS TO BE AWARE OF ALL INSPECTIONS TO BE MADE BY THE ENGINEER AS A REQUIREMENT OF THE PRODUCER STATEMENT PS4 CONSTRUCTION REVIEW DOCUMENTATION. THE ENGINEER WILL REQUIRE 24 HOURS PRIOR NOTIFICATION WHEN ALL STRUCTURAL ELEMENTS ARE READY TO BE INSPECTED.

stratagroup
 CONSULTING ENGINEERS

P 06 876 7646
 F 06 876 7645
 www.stratagroup.net.nz

PO BOX 758
 Business HQ
 1/308 Queen Street East
 Hastings, New Zealand

Structural Fire Civil Project Management

CLIENT: **GREENSTONE LAND DEVELOPMENTS LTD**

PROJECT: **LYNDHURST ARBUCKLE SUBDIVISION**

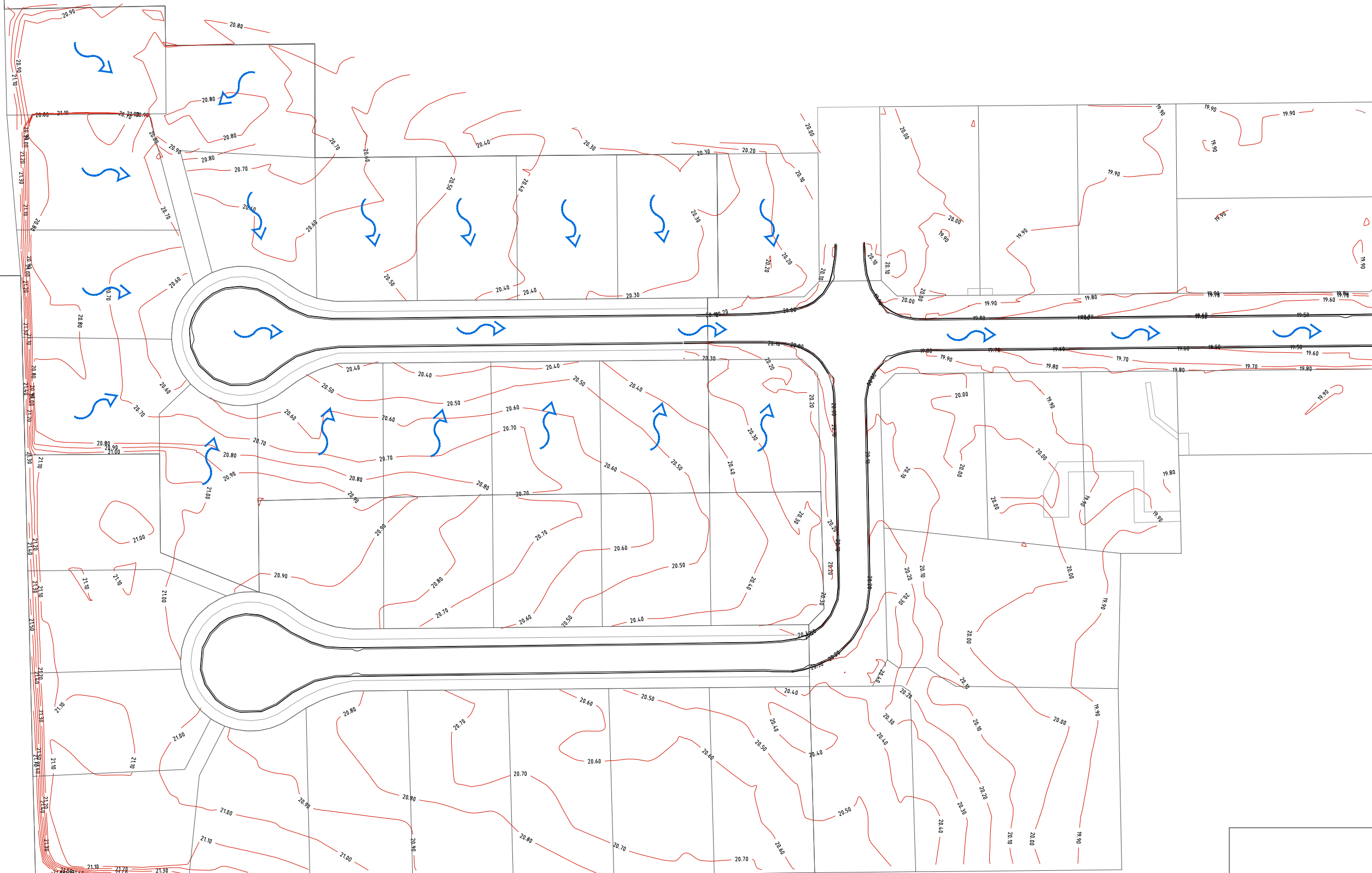
TITLE: **CONTOUR PLAN AND OVERLAND FLOW STAGE 5**

This drawing and its contents are the property of Strata Group Consulting Engineers Ltd. Any unauthorized employment or reproduction in full or part is forbidden.



DESIGNED DJ	0 2.5 5 10 15
DRAWN PB	Full Size 1:250 ; Half Size 1:500
CHECKED DJ	Scale (m)
DATE 19/03/18	
PROJECT NO. J4293	SHEET: C001 REVISION: 1



LYNDHURST ROAD



LEGEND:

-  - OVERLAND FLOW PATH
-  - 0.1m CONTOUR INTERVALS

SAFETY IN DESIGN

ALL REASONABLY PRACTICABLE STEPS HAVE BEEN TAKEN TO ENSURE SAFETY IN DESIGN HAS BEEN CONSIDERED WITHIN STRATA GROUP'S SCOPE OF WORK FOR THIS DESIGN IN ACCORDANCE WITH IPENZ PRACTICE NOTE 07 "DESIGN FOR SAFETY IN BUILDINGS AND OTHER STRUCTURES (JULY 2006)". IT REMAINS THE RESPONSIBILITY OF THE OWNER AND/OR OPERATOR TO ENSURE APPROPRIATE PRACTICES ARE IN PLACE TO PROTECT THE SAFETY OF THE WORKERS AND THE PUBLIC IN THE OPERATION OF THE FACILITY.

REV	FOR AS BUILT	REASON FOR ISSUE	DATE	BY
1			19/03/2018	PB

REV	FOR AS BUILT	REASON FOR ISSUE	DATE	BY
1			19/03/2018	PB

THE CONTRACTOR IS TO BE AWARE OF ALL INSPECTIONS TO BE MADE BY THE ENGINEER AS A REQUIREMENT OF THE PRODUCER STATEMENT PSA CONSTRUCTION REVIEW DOCUMENTATION. THE ENGINEER WILL REQUIRE 24 HOURS PRIOR NOTIFICATION WHEN ALL STRUCTURAL ELEMENTS ARE READY TO BE INSPECTED.

stratagroup
CONSULTING ENGINEERS

P 06 876 7646
F 06 876 7645
www.stratagroup.net.nz

PO BOX 758
Business HQ
1/308 Queen Street East
Hastings, New Zealand
Civil Project Management

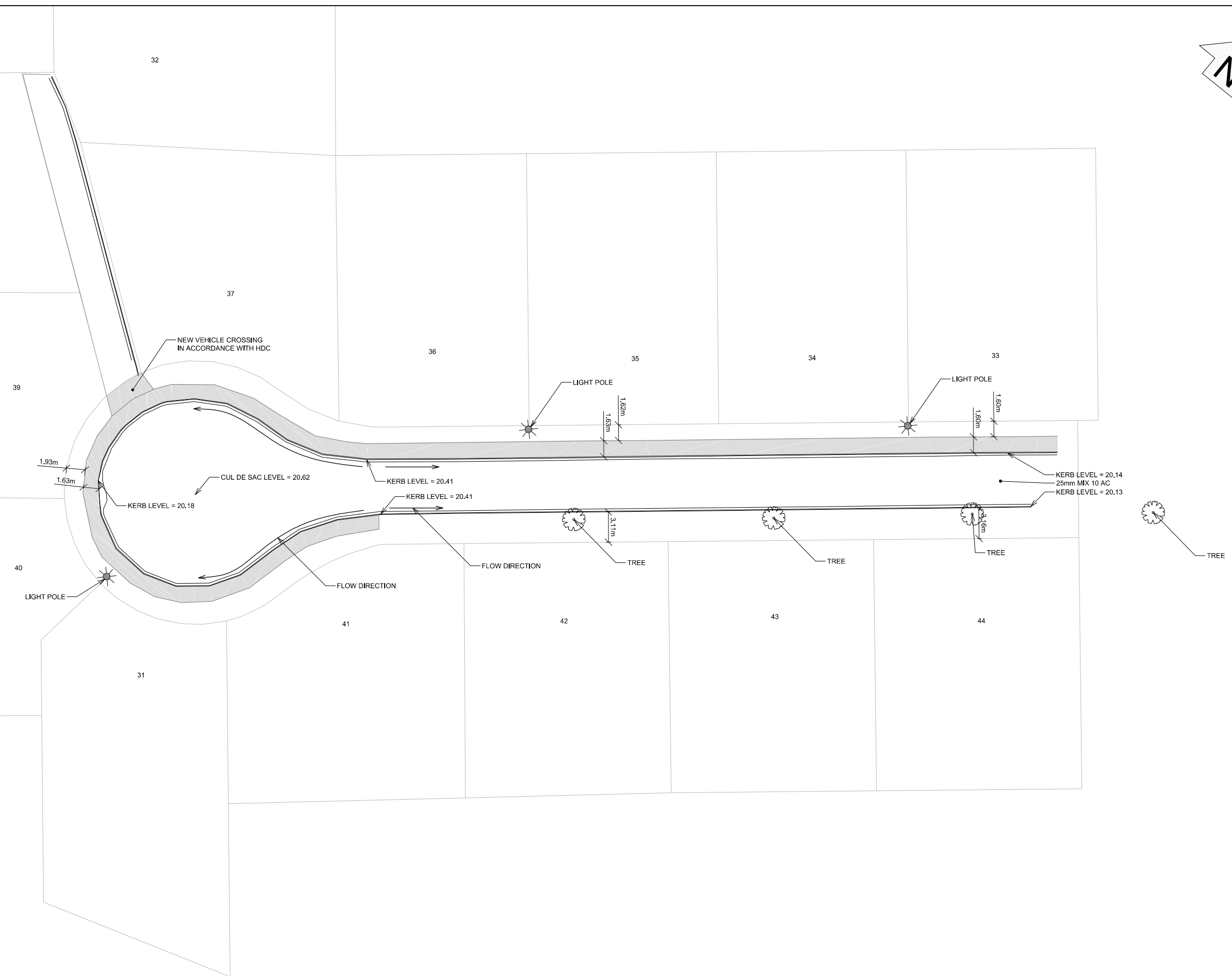
CLIENT: GREENSTONE LAND DEVELOPMENTS LTD

PROJECT: LYNDHURST ARBUCKLE SUBDIVISION

TITLE: CONTOUR PLAN ENTIRE SITE STAGE 5

DESIGNED DJ	0 2 4 8 12	
DRAWN PB	Full Size 1:400 ; Half Size 1:800	
CHECKED DJ	Scale (m)	
DATE 19/03/18	PROJECT NO. J4293	REVISION: 1
	SHEET: C002	

This drawing and its contents are the property of Strata Group Consulting Engineers Ltd. Any unauthorized employment or reproduction in full or part is forbidden.



SAFETY IN DESIGN			
ALL REASONABLY PRACTICABLE STEPS HAVE BEEN TAKEN TO ENSURE SAFETY IN DESIGN HAS BEEN CONSIDERED WITHIN STRATA GROUP'S SCOPE OF WORK FOR THIS DESIGN IN ACCORDANCE WITH IPENZ PRACTICE NOTE 07 "DESIGN FOR SAFETY IN BUILDINGS AND OTHER STRUCTURES (JULY 2006)". IT REMAINS THE RESPONSIBILITY OF THE OWNER AND/OR OPERATOR TO ENSURE APPROPRIATE PRACTICES ARE IN PLACE TO PROTECT THE SAFETY OF THE WORKERS AND THE PUBLIC IN THE OPERATION OF THE FACILITY.			
1	FOR ASBUILT	20/03/2018	PB
REV	REASON FOR ISSUE	DATE	BY

THE CONTRACTOR IS TO BE AWARE OF ALL INSPECTIONS TO BE MADE BY THE ENGINEER AS A REQUIREMENT OF THE PRODUCER STATEMENT PS4 CONSTRUCTION REVIEW DOCUMENTATION. THE ENGINEER WILL REQUIRE 24 HOURS PRIOR NOTIFICATION WHEN ALL STRUCTURAL ELEMENTS ARE READY TO BE INSPECTED.

stratagroup
CONSULTING ENGINEERS

P 06 876 7646
F 06 876 7645
www.stratagroup.net.nz

PO BOX 758
Business HQ
1/308 Queen Street East
Hastings, New Zealand

Structural Fire Civil Project Management

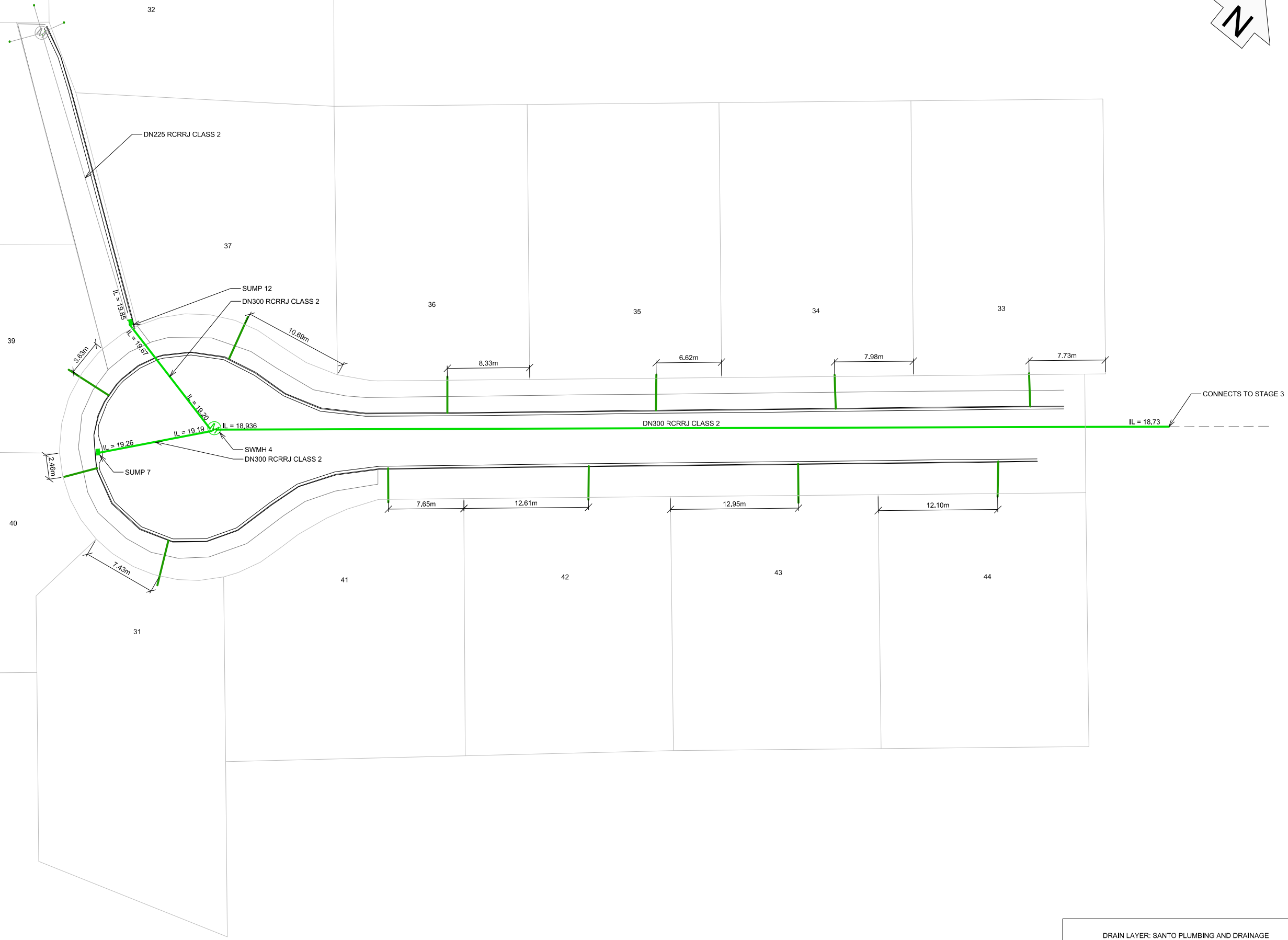
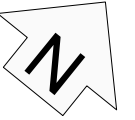
CLIENT: GREENSTONE LAND DEVELOPMENTS LTD

PROJECT: LYNDBURST ARBUCKLE SUBDIVISION

TITLE: FP & ROAD ASBUILT PLAN STAGE 5

This drawing and its contents are the property of Strata Group Consulting Engineers Ltd. Any unauthorized employment or reproduction in full or part is forbidden.

DESIGNED DJ	0 2 4 8 12	
DRAWN PB	Full Size 1:200 ; Half Size 1:400	
CHECKED DJ	Scale (m)	
DATE 20/03/18	PROJECT NO. J4293	REVISION: 1
	SHEET: C003	



DRAIN LAYER: SANTO PLUMBING AND DRAINAGE
 DATE LAID: 11th - 15th DECEMBER 2017

SAFETY IN DESIGN

ALL REASONABLY PRACTICABLE STEPS HAVE BEEN TAKEN TO ENSURE SAFETY IN DESIGN HAS BEEN CONSIDERED WITHIN STRATA GROUP'S SCOPE OF WORK FOR THIS DESIGN IN ACCORDANCE WITH IPENZ PRACTICE NOTE 07 "DESIGN FOR SAFETY IN BUILDINGS AND OTHER STRUCTURES (JULY 2006)". IT REMAINS THE RESPONSIBILITY OF THE OWNER AND/OR OPERATOR TO ENSURE APPROPRIATE PRACTICES ARE IN PLACE TO PROTECT THE SAFETY OF THE WORKERS AND THE PUBLIC IN THE OPERATION OF THE FACILITY.

REV	REASON FOR ISSUE	DATE	BY
1	FOR ASBUILT	20/03/2018	PB

REV	REASON FOR ISSUE	DATE	BY
1	FOR ASBUILT	20/03/2018	PB

THE CONTRACTOR IS TO BE AWARE OF ALL INSPECTIONS TO BE MADE BY THE ENGINEER AS A REQUIREMENT OF THE PRODUCER STATEMENT PS4 CONSTRUCTION REVIEW DOCUMENTATION. THE ENGINEER WILL REQUIRE 24 HOURS PRIOR NOTIFICATION WHEN ALL STRUCTURAL ELEMENTS ARE READY TO BE INSPECTED.

stratagroup
 CONSULTING ENGINEERS

P 06 876 7646
 F 06 876 7645
 www.stratagroup.net.nz

PO BOX 758
 Business HQ
 1/308 Queen Street East
 Hastings, New Zealand

Structural Fire Civil Project Management

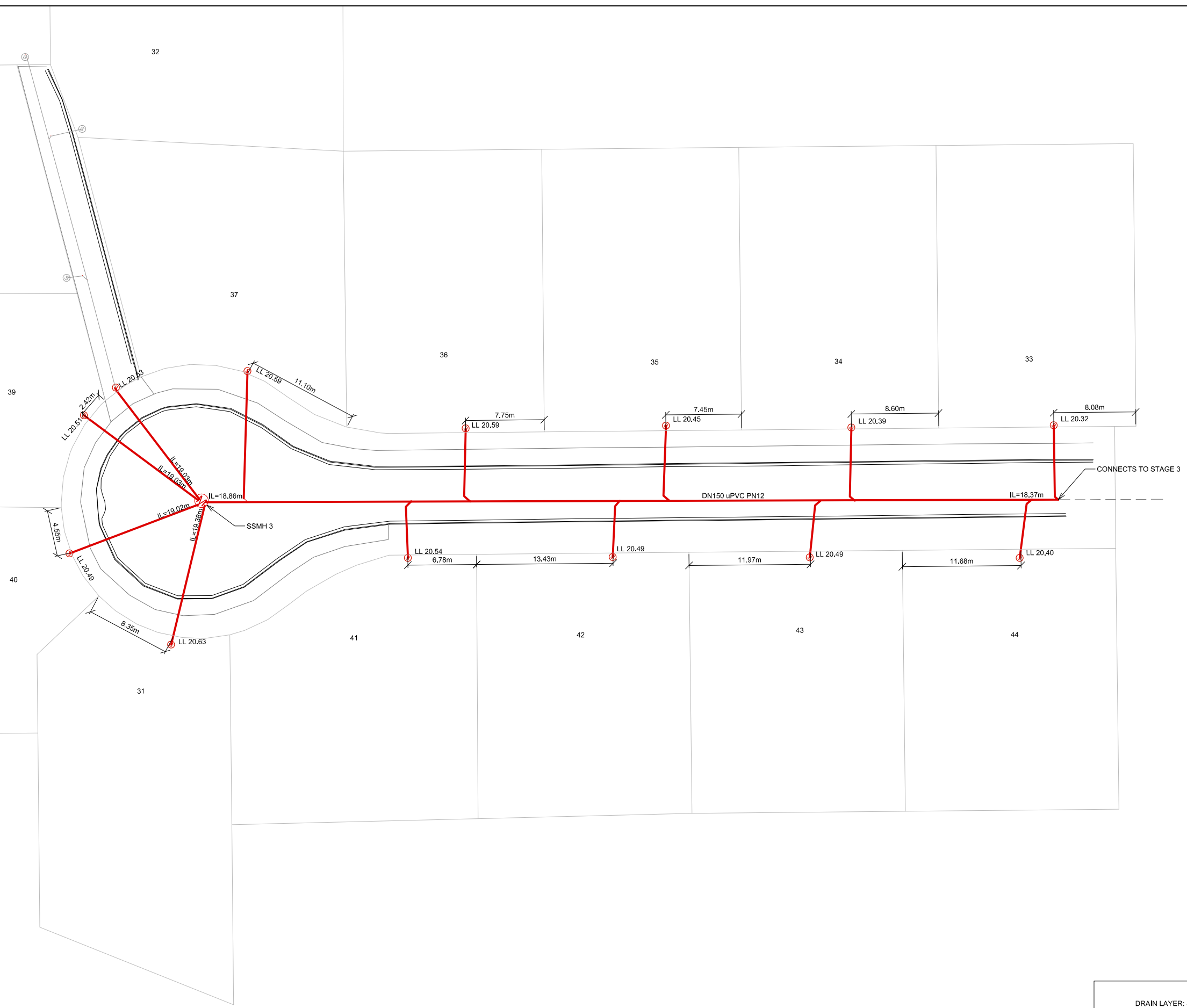
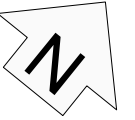
CLIENT: GREENSTONE LAND DEVELOPMENTS LTD

PROJECT: LYNDBURST ARBUCKLE SUBDIVISION

TITLE: STORMWATER ASBUILT PLAN

DESIGNED DJ	0 2 4 8 12 Full Size 1:200 ; Half Size 1:400 Scale (m)
DRAWN PB	
CHECKED DJ	
DATE 20/03/18	
PROJECT NO. J4293	SHEET: C004
	REVISION: 1

This drawing and its contents are the property of Strata Group Consulting Engineers Ltd. Any unauthorized employment or reproduction in full or part is forbidden.



DRAIN LAYER: SANTO PLUMBING AND DRAINAGE

DATE LAID: 11th - 15th DECEMBER 2017

SAFETY IN DESIGN

ALL REASONABLY PRACTICABLE STEPS HAVE BEEN TAKEN TO ENSURE SAFETY IN DESIGN HAS BEEN CONSIDERED WITHIN STRATA GROUP'S SCOPE OF WORK FOR THIS DESIGN IN ACCORDANCE WITH IPENZ PRACTICE NOTE 07 "DESIGN FOR SAFETY IN BUILDINGS AND OTHER STRUCTURES (JULY 2006)". IT REMAINS THE RESPONSIBILITY OF THE OWNER AND/OR OPERATOR TO ENSURE APPROPRIATE PRACTICES ARE IN PLACE TO PROTECT THE SAFETY OF THE WORKERS AND THE PUBLIC IN THE OPERATION OF THE FACILITY.

REV	REASON FOR ISSUE	DATE	BY
1	FOR ASBUILT	20/03/2018	PB

REV	REASON FOR ISSUE	DATE	BY
1	FOR ASBUILT	20/03/2018	PB

THE CONTRACTOR IS TO BE AWARE OF ALL INSPECTIONS TO BE MADE BY THE ENGINEER AS A REQUIREMENT OF THE PRODUCER STATEMENT PS4 CONSTRUCTION REVIEW DOCUMENTATION. THE ENGINEER WILL REQUIRE 24 HOURS PRIOR NOTIFICATION WHEN ALL STRUCTURAL ELEMENTS ARE READY TO BE INSPECTED.

stratagroup
CONSULTING ENGINEERS

P 06 876 7646
F 06 876 7645
www.stratagroup.net.nz

PO BOX 758
Business HQ
1/308 Queen Street East
Hastings, New Zealand

Structural Fire Civil Project Management

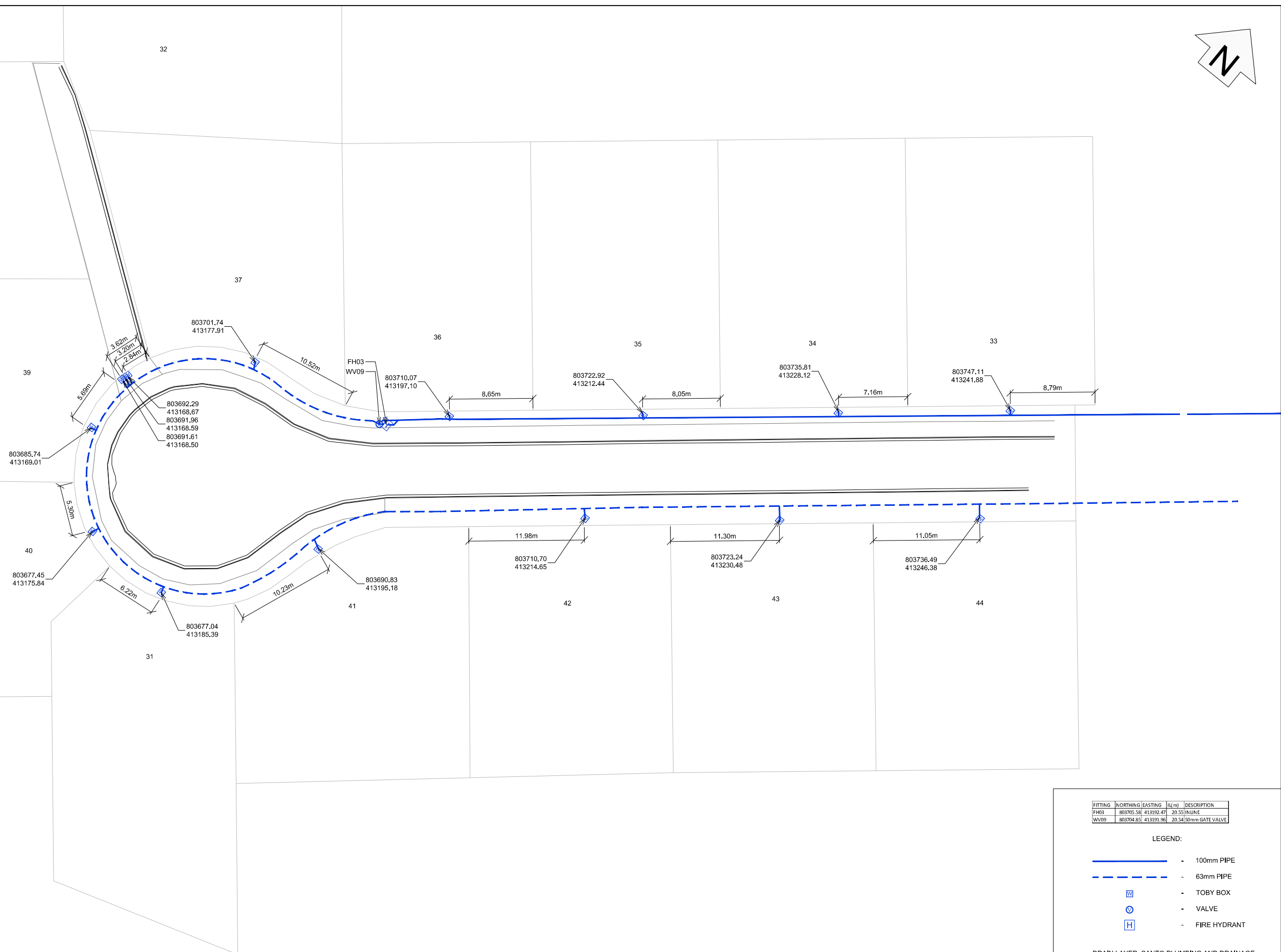
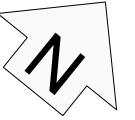
CLIENT: GREENSTONE LAND DEVELOPMENTS LTD

PROJECT: LYNDBURST ARBUCKLE SUBDIVISION

TITLE: WASTEWATER ASBUILT PLAN

This drawing and its contents are the property of Strata Group Consulting Engineers Ltd. Any unauthorized employment or reproduction in full or part is forbidden.

DESIGNED DJ	0 2 4 8 12
DRAWN PB	Full Size 1:200 ; Half Size 1:400
CHECKED DJ	Scale (m)
DATE 20/03/18	
PROJECT NO. J4293	SHEET: C005
	REVISION: 1



FITTING	NORTHING	EASTING	IL(m)	DESCRIPTION
FH03	803705.58	413192.47	20.55	INLINE
WV09	803704.85	413191.96	20.54	50mm GATE VALVE

LEGEND:

- - 100mm PIPE
- - - - - - 63mm PIPE
- W - TOBY BOX
- V - VALVE
- H - FIRE HYDRANT

DRAIN LAYER: SANTO PLUMBING AND DRAINAGE

DATE LAID: 09/2017 - 11/2017

SAFETY IN DESIGN			
ALL REASONABLY PRACTICABLE STEPS HAVE BEEN TAKEN TO ENSURE SAFETY IN DESIGN HAS BEEN CONSIDERED WITHIN STRATA GROUP'S SCOPE OF WORK FOR THIS DESIGN IN ACCORDANCE WITH IPENZ PRACTICE NOTE 07 "DESIGN FOR SAFETY IN BUILDINGS AND OTHER STRUCTURES (JULY 2006)". IT REMAINS THE RESPONSIBILITY OF THE OWNER AND/OR OPERATOR TO ENSURE APPROPRIATE PRACTICES ARE IN PLACE TO PROTECT THE SAFETY OF THE WORKERS AND THE PUBLIC IN THE OPERATION OF THE FACILITY.			
1	FOR ASBUILT	20/03/2018	PB
REV	REASON FOR ISSUE	DATE	BY

REV	REASON FOR ISSUE	DATE	BY
1	FOR ASBUILT	20/03/2018	PB

THE CONTRACTOR IS TO BE AWARE OF ALL INSPECTIONS TO BE MADE BY THE ENGINEER AS A REQUIREMENT OF THE PRODUCER STATEMENT PS4 CONSTRUCTION REVIEW DOCUMENTATION. THE ENGINEER WILL REQUIRE 24 HOURS PRIOR NOTIFICATION WHEN ALL STRUCTURAL ELEMENTS ARE READY TO BE INSPECTED.

stratagroup
CONSULTING ENGINEERS

P 06 876 7646
F 06 876 7645
www.stratagroup.net.nz

PO BOX 758
Business HQ
1/308 Queen Street East
Hastings, New Zealand

Structural Fire Civil Project Management

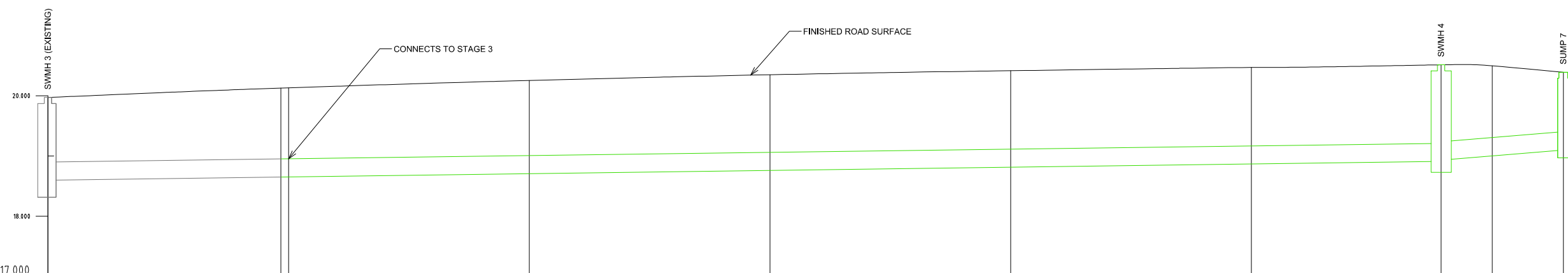
CLIENT: GREENSTONE LAND DEVELOPMENTS LTD

PROJECT: LYNDBURST ARBUCKLE SUBDIVISION

TITLE: WATER ASBUILT PLAN

This drawing and its contents are the property of Strata Group Consulting Engineers Ltd. Any unauthorized employment or reproduction in full or part is forbidden.

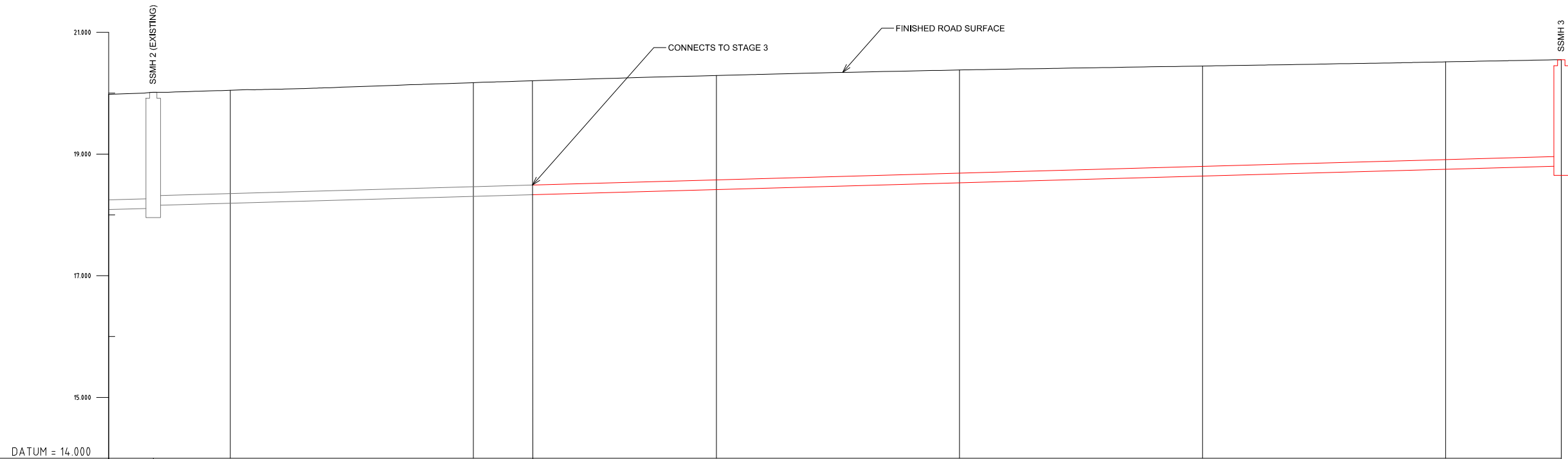
DESIGNED DJ	0 2 4 8 12 Full Size 1:200 ; Half Size 1:400 Scale (m)
DRAWN PB	
CHECKED DJ	
DATE 20/03/18	
PROJECT NO. J4293	SHEET: C006
	REVISION: 1



DEPTH TO INVERT								1.59		0.97
INVERT LEVEL		18.73						18.94	19.20	19.26
LID LEVEL								20.53		20.23
CHAINAGE		19.99						115.75		127.28
PIPE SIZE & GRADIENT								DN 300 RCRRJ CLASS 2 @ 1:374		DN 300 RCRRJ CLASS 2 @ 1:22

LONGITUDINAL SECTION
HORIZONTAL SCALE 1:200 VERTICAL SCALE 1:40

SAFETY IN DESIGN ALL REASONABLY PRACTICABLE STEPS HAVE BEEN TAKEN TO ENSURE SAFETY IN DESIGN HAS BEEN CONSIDERED WITHIN STRATA GROUP'S SCOPE OF WORK FOR THIS DESIGN IN ACCORDANCE WITH IPENZ PRACTICE NOTE 07 "DESIGN FOR SAFETY IN BUILDINGS AND OTHER STRUCTURES (JULY 2006)". IT REMAINS THE RESPONSIBILITY OF THE OWNER AND/OR OPERATOR TO ENSURE APPROPRIATE PRACTICES ARE IN PLACE TO PROTECT THE SAFETY OF THE WORKERS AND THE PUBLIC IN THE OPERATION OF THE FACILITY.					THE CONTRACTOR IS TO BE AWARE OF ALL INSPECTIONS TO BE MADE BY THE ENGINEER AS A REQUIREMENT OF THE PRODUCER STATEMENT PS4 CONSTRUCTION REVIEW DOCUMENTATION. THE ENGINEER WILL REQUIRE 24 HOURS PRIOR NOTIFICATION WHEN ALL STRUCTURAL ELEMENTS ARE READY TO BE INSPECTED.		CLIENT: GREENSTONE LAND DEVELOPMENTS LTD	PROJECT: LYNDHURST ARBUCKLE SUBDIVISION	TITLE: STORMWATER LONGITUDINAL SECTION ASBUILT	DESIGNED DJ DRAWN PB CHECKED DJ DATE 20/03/18	
	1 FOR ASBUILT 20/03/2018 PB REV REASON FOR ISSUE DATE BY	PROJECT NO.: J4293 SHEET: C007 REVISION: 1	This drawing and its contents are the property of Strata Group Consulting Engineers Ltd. Any unauthorized employment or reproduction in full or part is forbidden.								



LONGITUDINAL SECTION
HORIZONTAL SCALE 1:200 VERTICAL SCALE 1:40

SAFETY IN DESIGN			
ALL REASONABLY PRACTICABLE STEPS HAVE BEEN TAKEN TO ENSURE SAFETY IN DESIGN HAS BEEN CONSIDERED WITHIN STRATA GROUP'S SCOPE OF WORK FOR THIS DESIGN IN ACCORDANCE WITH IPENZ PRACTICE NOTE 07 "DESIGN FOR SAFETY IN BUILDINGS AND OTHER STRUCTURES (JULY 2006)". IT REMAINS THE RESPONSIBILITY OF THE OWNER AND/OR OPERATOR TO ENSURE APPROPRIATE PRACTICES ARE IN PLACE TO PROTECT THE SAFETY OF THE WORKERS AND THE PUBLIC IN THE OPERATION OF THE FACILITY.			
1	FOR ASBUILT	20/03/2018	PB
REV	REASON FOR ISSUE	DATE	BY

THE CONTRACTOR IS TO BE AWARE OF ALL INSPECTIONS TO BE MADE BY THE ENGINEER AS A REQUIREMENT OF THE PRODUCER STATEMENT PS4 CONSTRUCTION REVIEW DOCUMENTATION. THE ENGINEER WILL REQUIRE 24 HOURS PRIOR NOTIFICATION WHEN ALL STRUCTURAL ELEMENTS ARE READY TO BE INSPECTED.

stratagroup
CONSULTING ENGINEERS

P 06 876 7646
F 06 876 7645
www.stratagroup.net.nz

PO BOX 758
Business HQ
1/308 Queen Street East
Hastings, New Zealand

Structural Fire Civil Project Management

CLIENT: GREENSTONE LAND DEVELOPMENTS LTD

PROJECT: LYNDBURST ARBUCKLE SUBDIVISION

TITLE: WASTEWATER LONGITUDINAL SECTION ASBUILT

DESIGNED DJ	0 2 4 8 12	
DRAWN PB	Full Size 1:200 ; Half Size 1:400	
CHECKED DJ	Scale (m)	
DATE 20/03/18	PROJECT NO. J4293	REVISION: 1
	SHEET: C008	

This drawing and its contents are the property of Strata Group Consulting Engineers Ltd. Any unauthorized employment or reproduction in full or part is forbidden.