

**LEGEND:**

- PRIMARY FLOW PATH
- SECONDARY FLOW PATH

**SAFETY IN DESIGN**

ALL REASONABLY PRACTICABLE STEPS HAVE BEEN TAKEN TO ENSURE SAFETY IN DESIGN HAS BEEN CONSIDERED WITHIN STRATA GROUPS SCOPE OF WORK FOR THIS DESIGN IN ACCORDANCE WITH IPENZ PRACTICE NOTE 07 "DESIGN FOR SAFETY IN BUILDINGS AND OTHER STRUCTURES (JULY 2006)". IT REMAINS THE RESPONSIBILITY OF THE OWNER AND/OR OPERATOR TO ENSURE APPROPRIATE PRACTICES ARE IN PLACE TO PROTECT THE SAFETY OF THE WORKERS AND THE PUBLIC IN THE OPERATION OF THE FACILITY.

REV	REASON FOR ISSUE	DATE	BY
1	AS-BUILT	23/9/20	MC

DESIGNED	DRAWN	CHECKED	DATE
MC	MC	DJ	23/9/20

THE CONTRACTOR IS TO BE AWARE OF ALL INSPECTIONS TO BE MADE BY THE ENGINEER AS A REQUIREMENT OF THE PRODUCER STATEMENT. PS4 CONSTRUCTION REVIEW DOCUMENTATION. THE ENGINEER WILL REQUIRE 24 HOURS PRIOR NOTIFICATION FOR ALL INSPECTIONS.

**stratagroup**  
CONSULTING ENGINEERS

P 06 876 7646  
F 06 876 7645  
www.stratagroup.net.nz

PO BOX 758  
Business HQ  
1/308 Queen Street East  
Hastings, New Zealand

Structural Fire Civil Project Management

CLIENT:

**Greenstone**  
LAND DEVELOPMENTS

PROJECT:

**LYNDHURST  
SUBDIVISION  
STAGE 12**

TITLE:

**ASBUILT  
OVERLAND FLOW  
PLAN STAGE 12**

This drawing and its contents are the property of Strata Group Consulting Engineers Ltd. Any unauthorized employment or reproduction in full or part is forbidden.

DESIGNED MC

DRAWN MC

CHECKED DJ

DATE 23/9/20

PROJECT NO.:

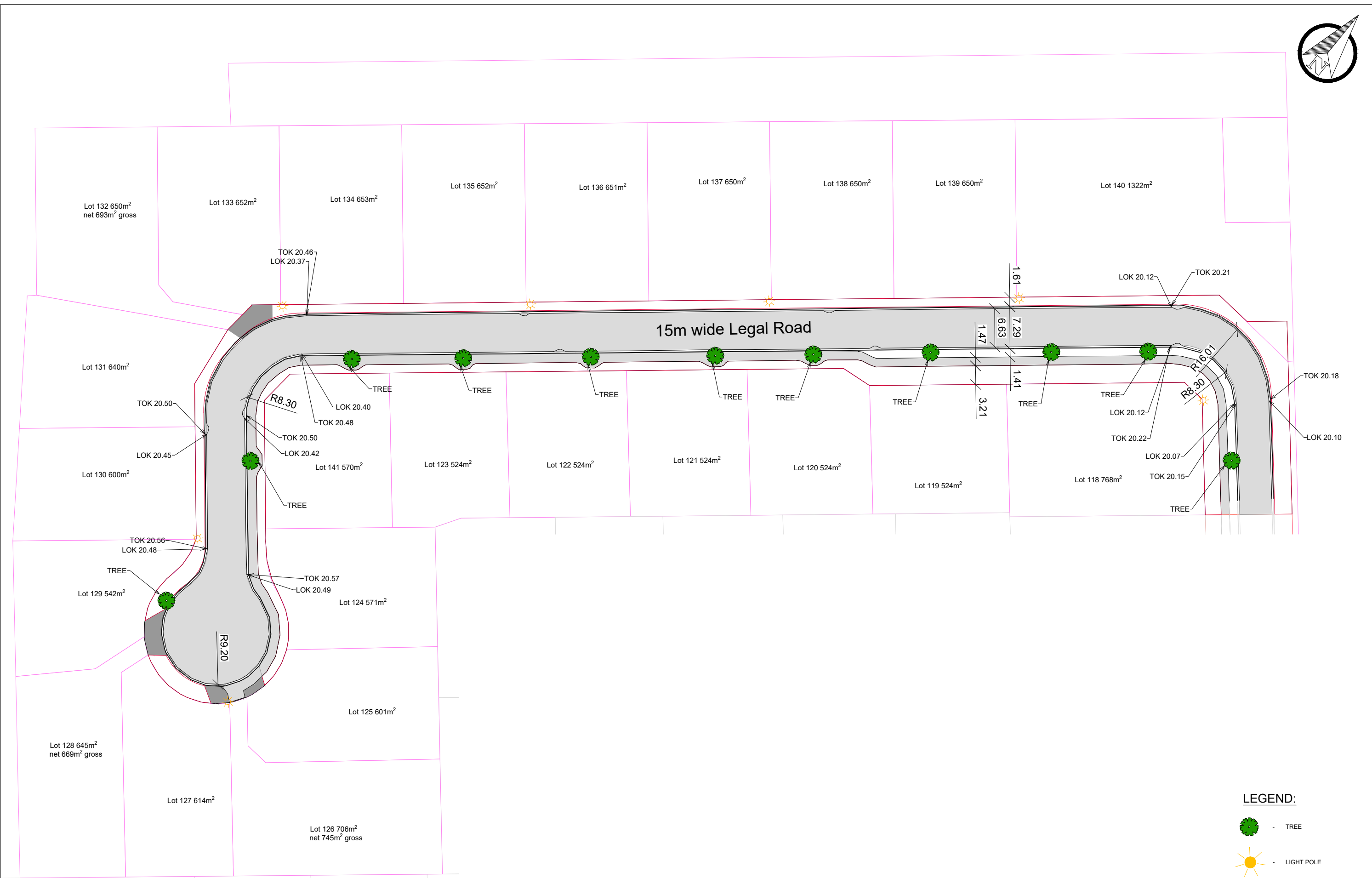
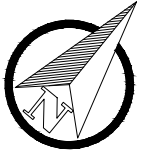


Full Size 1:300 ; Half Size 1:600  
Scale (m)



J4693

SHEET: AB004

REVISION: 1



**LEGEND:**

-  - TREE
-  - LIGHT POLE

**SAFETY IN DESIGN**

ALL REASONABLY PRACTICABLE STEPS HAVE BEEN TAKEN TO ENSURE SAFETY IN DESIGN HAS BEEN CONSIDERED WITHIN STRATA GROUP'S SCOPE OF WORK FOR THIS DESIGN IN ACCORDANCE WITH IPENZ PRACTICE NOTE 07 'DESIGN FOR SAFETY IN BUILDINGS AND OTHER STRUCTURES' (JULY 2006). IT REMAINS THE RESPONSIBILITY OF THE OWNER AND/OR OPERATOR TO ENSURE APPROPRIATE PRACTICES ARE IN PLACE TO PROTECT THE SAFETY OF THE WORKERS AND THE PUBLIC IN THE OPERATION OF THE FACILITY.

REV	REASON FOR ISSUE	DATE	BY
1	AS-BUILT	23/9/20	MC

DESIGNED	DRAWN	CHECKED	DATE
MC	MC	DJ	23/9/20

THE CONTRACTOR IS TO BE AWARE OF ALL INSPECTIONS TO BE MADE BY THE ENGINEER AS A REQUIREMENT OF THE PRODUCER STATEMENT PS4 CONSTRUCTION REVIEW DOCUMENTATION. THE ENGINEER WILL REQUIRE 24 HOURS PRIOR NOTIFICATION FOR ALL INSPECTIONS.

**stratagroup**  
CONSULTING ENGINEERS

P 06 876 7646  
F 06 876 7645  
www.stratagroup.net.nz

PO BOX 758  
Business HQ  
1/308 Queen Street East  
Hastings, New Zealand

Structural Fire Civil Project Management

CLIENT:

**Greenstone**  
LAND DEVELOPMENTS

PROJECT:

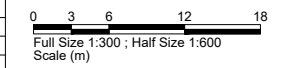
**LYNDHURST  
SUBDIVISION  
STAGE 12**

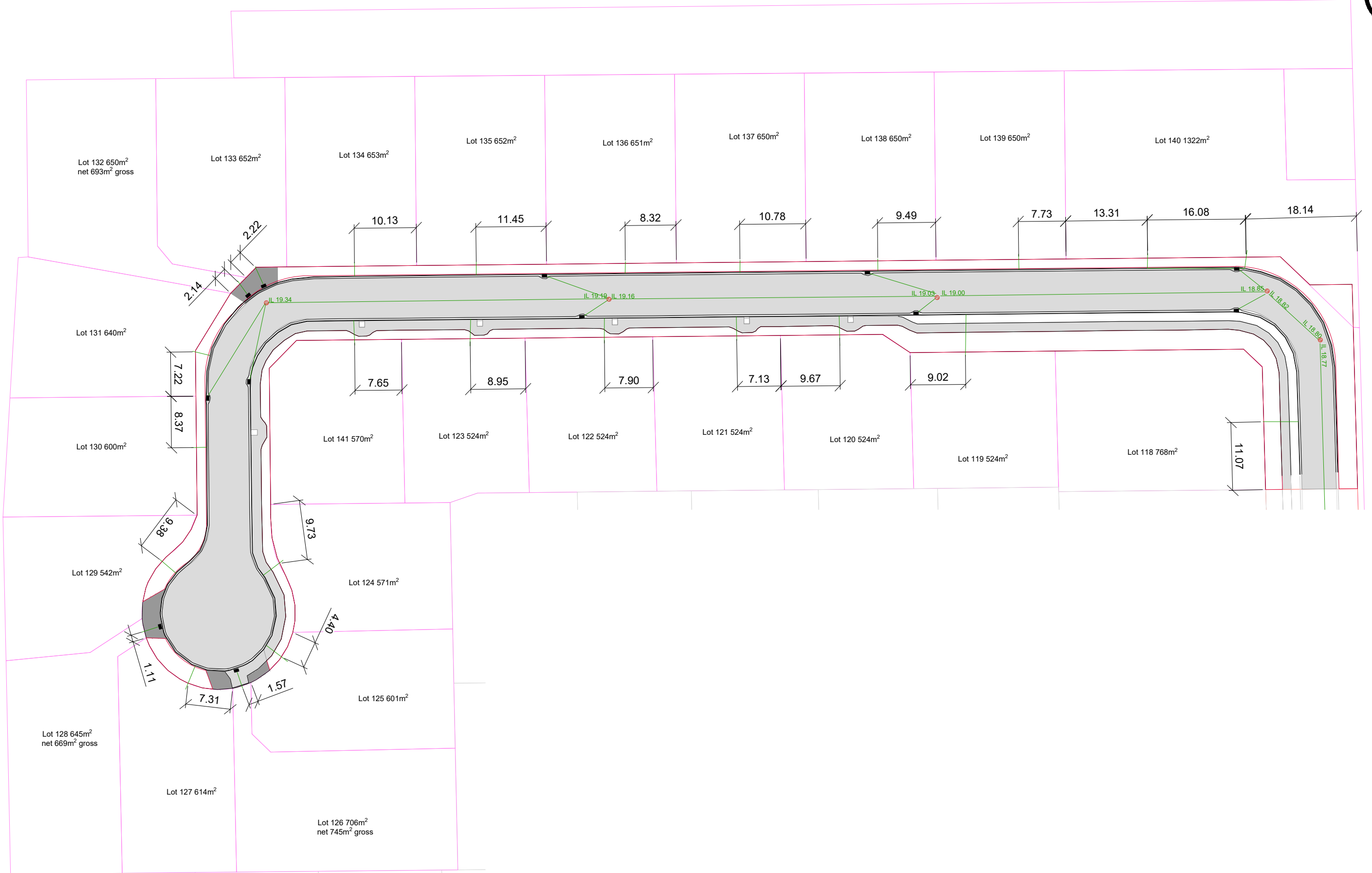
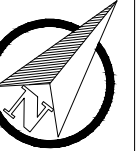
TITLE:

**ASBUILT  
ROAD AND FOOTPATH  
PLAN STAGE 12**

DESIGNED	MC
DRAWN	MC
CHECKED	DJ
DATE	23/9/20

PROJECT NO.:	J4693	SHEET:	AB010	REVISION:	1
--------------	-------	--------	-------	-----------	---





**SAFETY IN DESIGN**

ALL REASONABLY PRACTICABLE STEPS HAVE BEEN TAKEN TO ENSURE SAFETY IN DESIGN HAS BEEN CONSIDERED WITHIN STRATA GROUP'S SCOPE OF WORK FOR THIS DESIGN IN ACCORDANCE WITH IPENZ PRACTICE NOTE 07 'DESIGN FOR SAFETY IN BUILDINGS AND OTHER STRUCTURES (JULY 2006)'. IT REMAINS THE RESPONSIBILITY OF THE OWNER AND/OR OPERATOR TO ENSURE APPROPRIATE PRACTICES ARE IN PLACE TO PROTECT THE SAFETY OF THE WORKERS AND THE PUBLIC IN THE OPERATION OF THE FACILITY.

REV	REASON FOR ISSUE	DATE	BY
1	AS-BUILT	23/9/20	EM

REV	REASON FOR ISSUE	DATE	BY
1	AS-BUILT	23/9/20	EM

THE CONTRACTOR IS TO BE AWARE OF ALL INSPECTIONS TO BE MADE BY THE ENGINEER AS A REQUIREMENT OF THE PRODUCER STATEMENT PS4 CONSTRUCTION REVIEW DOCUMENTATION. THE ENGINEER WILL REQUIRE 24 HOURS PRIOR NOTIFICATION FOR ALL INSPECTIONS.

**stratagroup**  
CONSULTING ENGINEERS

P 06 876 7646  
F 06 876 7645  
www.stratagroup.net.nz

PO BOX 758  
Business HQ  
1/308 Queen Street East  
Hastings, New Zealand

Structural Fire Civil Project Management

CLIENT:

**Greenstone**  
LAND DEVELOPMENTS

PROJECT:

**LYNDHURST  
SUBDIVISION  
STAGE 12**

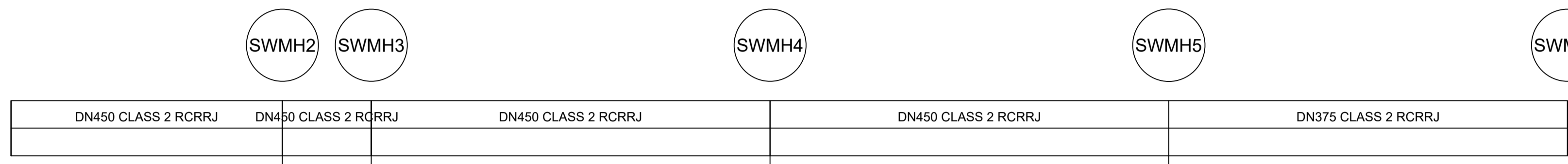
TITLE:

**ASBUILT  
STORMWATER SERVICES  
LAYOUT STAGE 12**

This drawing and its contents are the property of Strata Group Consulting Engineers Ltd. Any unauthorized employment or reproduction in full or part is forbidden.

DESIGNED MC	0 3 6 12 18
DRAWN MC	Full Size 1:300 ; Half Size 1:600
CHECKED DJ	Scale (m)
DATE 23/9/20	
PROJECT NO. J4693	SHEET: AB020
	REVISION: 1

PIPE DETAILS



SCALE: 1:500H, 1:100V  
 DATUM: 16.00  
 GRADE (%)  
 GRADE (1 IN ....)

COVER	0.948	0.882 0.852	0.866 0.836	0.779 0.749	0.716 0.767	0.688
INVERT LEVEL	18.640	18.770 18.800	18.820 18.850	19.000 19.030	19.160 19.190	19.340
FINISHED SURFACE LEVEL		20.140	20.174	20.267	20.364	20.435
CHAINAGE	45.13	113.962 12.11	126.071 20.174	180.373 54.30	234.676 54.30	288.978

STORMWATER 12 LONG SECTION

**SAFETY IN DESIGN**

ALL REASONABLY PRACTICABLE STEPS HAVE BEEN TAKEN TO ENSURE SAFETY IN DESIGN HAS BEEN CONSIDERED WITHIN STRATA GROUP'S SCOPE OF WORK FOR THIS DESIGN IN ACCORDANCE WITH IPENZ PRACTICE NOTE 07 'DESIGN FOR SAFETY IN BUILDINGS AND OTHER STRUCTURES (JULY 2006)'. IT REMAINS THE RESPONSIBILITY OF THE OWNER AND/OR OPERATOR TO ENSURE APPROPRIATE PRACTICES ARE IN PLACE TO PROTECT THE SAFETY OF THE WORKERS AND THE PUBLIC IN THE OPERATION OF THE FACILITY.

1	AS-BUILT	03/09/20	EM
REV	REASON FOR ISSUE	DATE	BY


THE CONTRACTOR IS TO BE AWARE OF ALL INSPECTIONS TO BE MADE BY THE ENGINEER AS A REQUIREMENT OF THE PRODUCER STATEMENT PS4 CONSTRUCTION REVIEW DOCUMENTATION. THE ENGINEER WILL REQUIRE 24 HOURS PRIOR NOTIFICATION FOR ALL INSPECTIONS.

**stratagroup**  
 CONSULTING ENGINEERS

P 06 876 7646  
 F 06 876 7645  
 www.stratagroup.net.nz

PO BOX 758  
 Business HQ  
 1/308 Queen Street East  
 Hastings, New Zealand

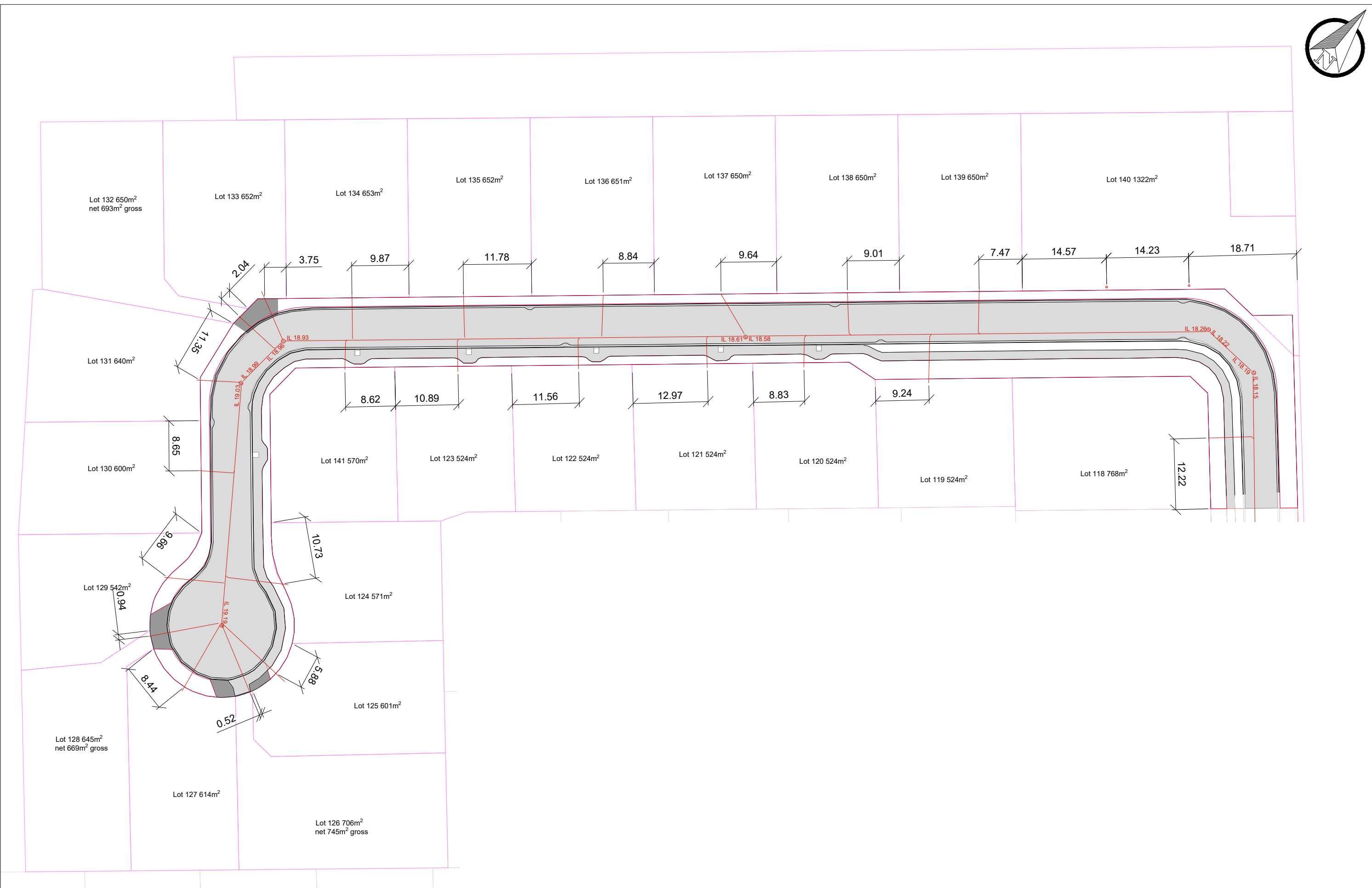
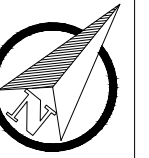
Structural Fire Civil Project Management

CLIENT: GREENSTONE LAND DEVELOPMENT LTD

PROJECT: LYNDBURST SUBDIVISION - STAGE 12

TITLE: AS BUILT STORMWATER LONG SECTION

DESIGNED MC	0	5	10	20	30
DRAWN MC	Full Size 1:500 ; Half Size 1:1000				
CHECKED DJ	Scale (m)				
DATE 9/7/19	PROJECT NO. J4693	SHEET: C021	REVISION: 1		



**SAFETY IN DESIGN**

ALL REASONABLY PRACTICABLE STEPS HAVE BEEN TAKEN TO ENSURE SAFETY IN DESIGN HAS BEEN CONSIDERED WITHIN STRATA GROUP'S SCOPE OF WORK FOR THIS DESIGN IN ACCORDANCE WITH IPENZ PRACTICE NOTE 07 'DESIGN FOR SAFETY IN BUILDINGS AND OTHER STRUCTURES (JULY 2006)'. IT REMAINS THE RESPONSIBILITY OF THE OWNER AND/OR OPERATOR TO ENSURE APPROPRIATE PRACTICES ARE IN PLACE TO PROTECT THE SAFETY OF THE WORKERS AND THE PUBLIC IN THE OPERATION OF THE FACILITY.

REV	REASON FOR ISSUE	DATE	BY
1	AS-BUILT	23/9/20	EM

REV	REASON FOR ISSUE	DATE	BY
1	AS-BUILT	23/9/20	EM

THE CONTRACTOR IS TO BE AWARE OF ALL INSPECTIONS TO BE MADE BY THE ENGINEER AS A REQUIREMENT OF THE PRODUCER STATEMENT PS4 CONSTRUCTION REVIEW DOCUMENTATION. THE ENGINEER WILL REQUIRE 24 HOURS PRIOR NOTIFICATION FOR ALL INSPECTIONS.

**stratagroup**  
CONSULTING ENGINEERS

P 06 876 7646  
F 06 876 7645  
www.stratagroup.net.nz

PO BOX 758  
Business HQ  
1/308 Queen Street East  
Hastings, New Zealand

Structural Fire Civil Project Management

CLIENT:

**Greenstone**  
LAND DEVELOPMENTS

PROJECT:

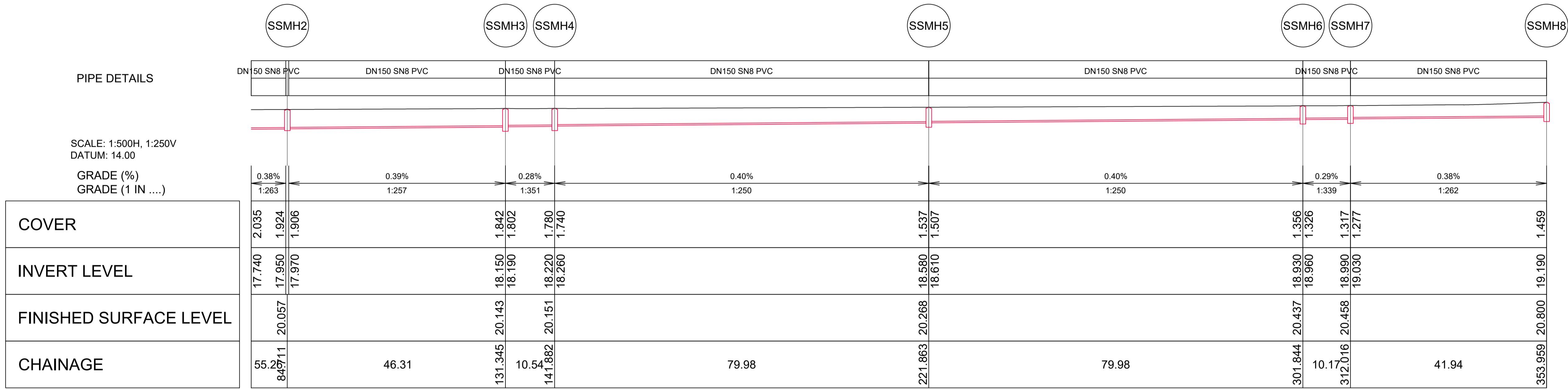
**LYNDHURST  
SUBDIVISION  
STAGE 12**

TITLE:

**ASBUILT  
WASTEWATER SERVICES  
LAYOUT STAGE 12**

This drawing and its contents are the property of Strata Group Consulting Engineers Ltd. Any unauthorized employment or reproduction in full or part is forbidden.

DESIGNED MC	0 3 6 12 18
DRAWN MC	Full Size 1:300 ; Half Size 1:600
CHECKED DJ	Scale (m)
DATE 23/9/20	
PROJECT NO. J4693	SHEET: AB030
	REVISION: 1



SEWER 12 LONG SECTION

**SAFETY IN DESIGN**

ALL REASONABLY PRACTICABLE STEPS HAVE BEEN TAKEN TO ENSURE SAFETY IN DESIGN HAS BEEN CONSIDERED WITHIN STRATA GROUP'S SCOPE OF WORK FOR THIS DESIGN IN ACCORDANCE WITH IPENZ PRACTICE NOTE 07 'DESIGN FOR SAFETY IN BUILDINGS AND OTHER STRUCTURES (JULY 2006)'. IT REMAINS THE RESPONSIBILITY OF THE OWNER AND/OR OPERATOR TO ENSURE APPROPRIATE PRACTICES ARE IN PLACE TO PROTECT THE SAFETY OF THE WORKERS AND THE PUBLIC IN THE OPERATION OF THE FACILITY.

REV	REASON FOR ISSUE	DATE	BY
1	AS-BUILT	03/09/20	EM

DESIGNED	DRAWN	CHECKED	DATE
MC	MC	DJ	9/7/19

THE CONTRACTOR IS TO BE AWARE OF ALL INSPECTIONS TO BE MADE BY THE ENGINEER AS A REQUIREMENT OF THE PRODUCER STATEMENT PS4 CONSTRUCTION REVIEW DOCUMENTATION. THE ENGINEER WILL REQUIRE 24 HOURS PRIOR NOTIFICATION FOR ALL INSPECTIONS.

**stratagroup**  
CONSULTING ENGINEERS

P 06 876 7646  
F 06 876 7645  
www.stratagroup.net.nz

PO BOX 758  
Business HQ  
1/308 Queen Street East  
Hastings, New Zealand

Structural Fire Civil Project Management

CLIENT: GREENSTONE LAND DEVELOPMENT LTD

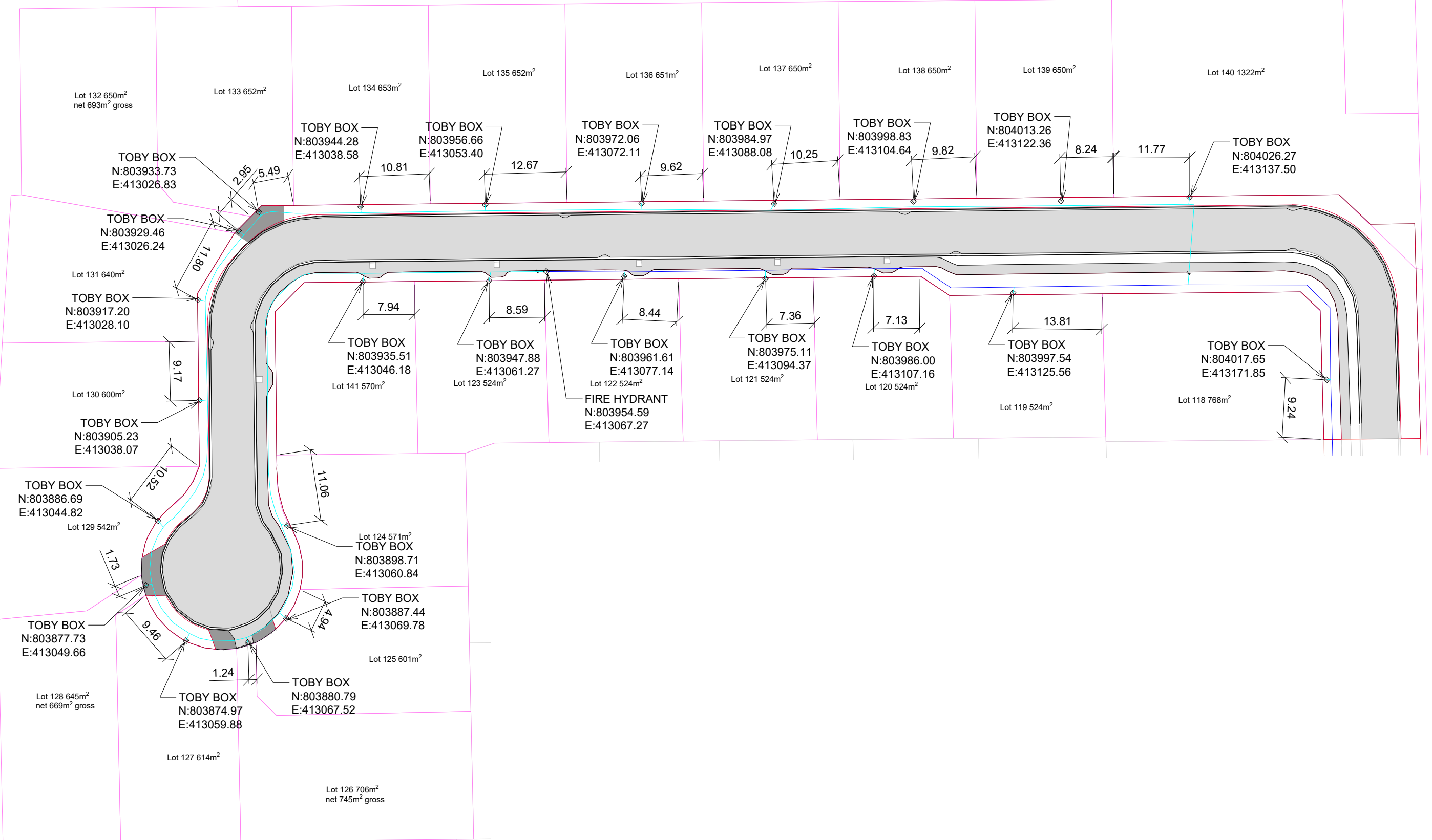
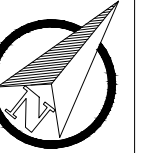
PROJECT: LYNDBURST SUBDIVISION - STAGE 12

TITLE: AS BUILT SEWER LONG SECTION

This drawing and its contents are the property of Strata Group Consulting Engineers Ltd. Any unauthorized employment or reproduction in full or part is forbidden.

DESIGNED	DRAWN	CHECKED	DATE	PROJECT NO.	SHEET	REVISION
MC	MC	DJ	9/7/19	J4693	C031	1

0 5 10 20 30  
Full Size 1:500 ; Half Size 1:1000  
Scale (m)



**SAFETY IN DESIGN**

ALL REASONABLY PRACTICABLE STEPS HAVE BEEN TAKEN TO ENSURE SAFETY IN DESIGN HAS BEEN CONSIDERED WITHIN STRATA GROUP'S SCOPE OF WORK FOR THIS DESIGN IN ACCORDANCE WITH IPENZ PRACTICE NOTE 07 "DESIGN FOR SAFETY IN BUILDINGS AND OTHER STRUCTURES (JULY 2006)". IT REMAINS THE RESPONSIBILITY OF THE OWNER AND/OR OPERATOR TO ENSURE APPROPRIATE PRACTICES ARE IN PLACE TO PROTECT THE SAFETY OF THE WORKERS AND THE PUBLIC IN THE OPERATION OF THE FACILITY.

REV	REASON FOR ISSUE	DATE	BY
1	AS-BUILT	23/9/20	EM

REV	REASON FOR ISSUE	DATE	BY
1	AS-BUILT	23/9/20	EM

THE CONTRACTOR IS TO BE AWARE OF ALL INSPECTIONS TO BE MADE BY THE ENGINEER AS A REQUIREMENT OF THE PRODUCER STATEMENT PS4 CONSTRUCTION REVIEW DOCUMENTATION. THE ENGINEER WILL REQUIRE 24 HOURS PRIOR NOTIFICATION FOR ALL INSPECTIONS.

**stratagroup**  
CONSULTING ENGINEERS

P 06 876 7646  
F 06 876 7645  
www.stratagroup.net.nz

PO BOX 758  
Business HQ  
1/308 Queen Street East  
Hastings, New Zealand

Structural Fire Civil Project Management

CLIENT:

**Greenstone**  
LAND DEVELOPMENTS

PROJECT:

**LYNDHURST  
SUBDIVISION  
STAGE 12**

TITLE:

**ASBUILT  
WATER SERVICES  
LAYOUT STAGE 12**

This drawing and its contents are the property of Strata Group Consulting Engineers Ltd. Any unauthorized employment or reproduction in full or part is forbidden.

DESIGNED MC	0	3	6	12	18
DRAWN MC	Full Size 1:300 ; Half Size 1:600				
CHECKED DJ	Scale (m)				
DATE 23/9/20	PROJECT NO. J4693	SHEET AB040	REVISION: 1		

DESIGNED MC	0	3	6	12	18
DRAWN MC	Full Size 1:300 ; Half Size 1:600				
CHECKED DJ	Scale (m)				
DATE 23/9/20	PROJECT NO. J4693	SHEET AB040	REVISION: 1		